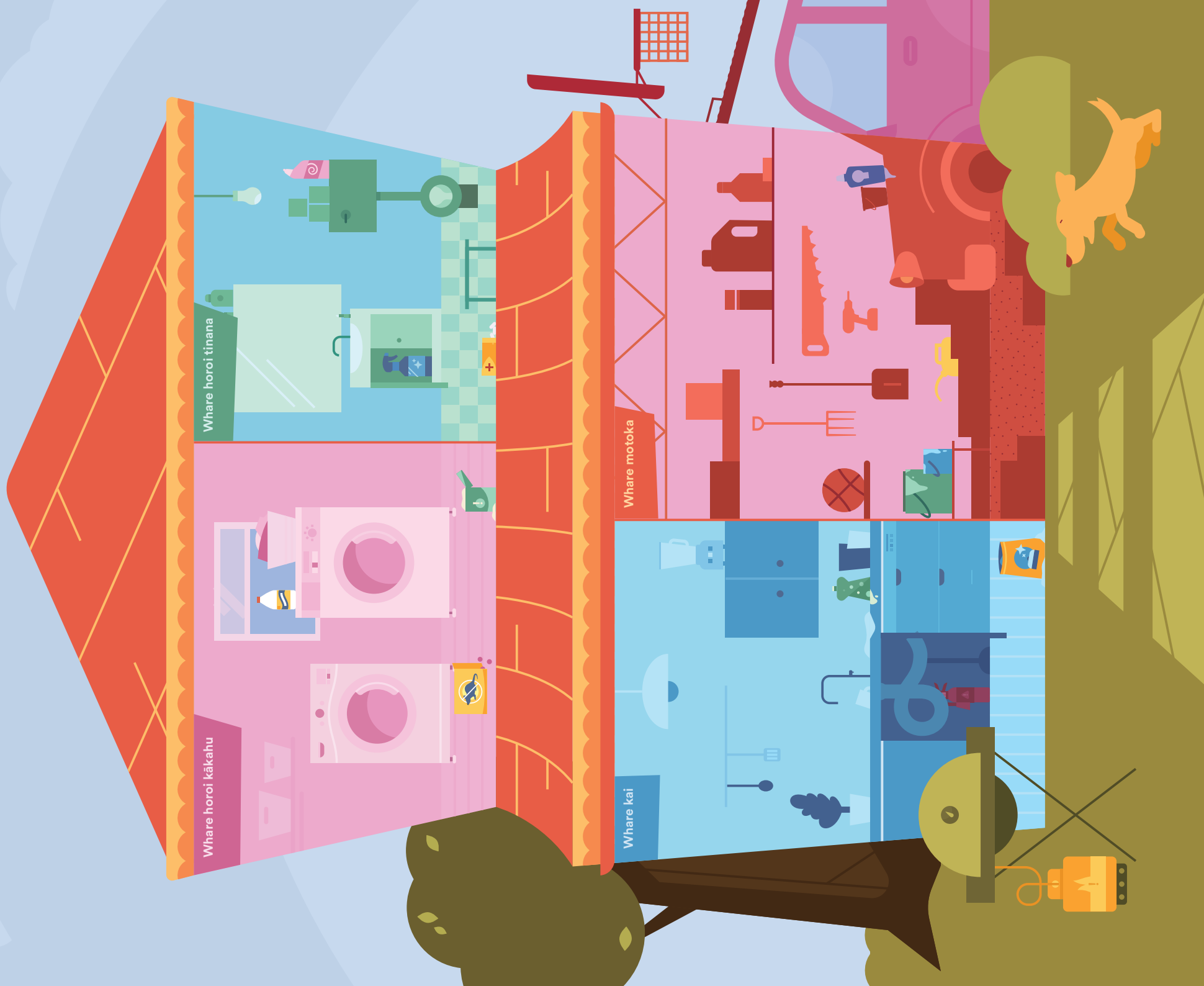


• Rapua ngā. mōrearea matū



Tirohia ngā tohutohu Rakaina atu Putua ki runga ake

He maha ngā mea whakapai whare, ngā mea mō te whare rānei, ka whakamahia e tātou ia rā i roto i ō tātou whare, tērā pea he mōrearea ki a tātou, ki te taiao rānei, mehemea kāore i te tika te whakamahi. He mea whakahirahira ka tika te whakamahi i ēnei mea kia noho haumarū ai, kia noho hauora pai ai hoki ngā tāngata katoa, ngā mea katoa hoki.

Kōrero ki a Māmā, ki a Pāpā hoki mō te:

- Tirotiro i ngā tohutohu i runga i te rawa, te whai hoki i ngā tohutohu
- Taupoki tika i ngā ipu
- Raka pai i ngā ipu, te putu atu i ērā ki runga ake, kia kore ai e tīkina

He aha ngā mea huna i roto i te whare?

- | | |
|----------------------------|---------------------------|
| 1. Paitini kiore | 8. Taputapu whakaweto ahi |
| 2. Waimārari | 9. Hopiwē horoi rīhi |
| 3. Paura horoi kākahu | 10. Peita |
| 4. Wai whakapai horoimanga | 11. Penehini |
| 5. Rongoā | 12. Wai horoi waka |
| 6. Wai whakapai wharepaku | 13. Pātara haurehu |
| 7. Wai horoi rīhi | |

Mō ētahi tiwhiri anō, pārongo anō hoki mō ngā kāinga haumarū, arā, ko Safer Homes, toro atu ki te whārangi pukamata o: [facebook.com/EPAgovtNZ](https://www.facebook.com/EPAgovtNZ), [epa.govt.nz/saferhomes](https://www.epa.govt.nz/saferhomes) rānei

