

SCHEDULE OF PROPOSED EASEMENTS

PURPOSE	SHOWN	BURDENED LAND	BENEFITED LAND
	C	Lot 203	Lots 201 & 202 (also Lot 1 & 15 RC190519)
	D	Lot 161	Lots 280, 281 282 & 283
	E	Lot 159	Lots 331 - 333, 335 & 806
	F	Lot 158	Lots 344 & 345
	G	Lot 157	Lots 348 & 349
	H	Lot 160	Lots 301 - 305
	I	Lot 154	Lots 455 & 456
	J	Lot 153	Lots 451 & 452
Right of Way	K	Lot 152	Lots 447 - 449
	L	Lot 151	Lots 445, 446, 462 & 463
	M	Lot 150	Lots 439 - 443 & 807
	N	Lot 155	Lots 458 - 461
	O	Lot 156	Lots 502 - 508
	P	Lot 162	Lots 376 - 380, 383 - 385 & 600
	Q	Lot 163	Lots 395 - 400 & 600
	R	Lot 166	Lots 412 & 414
	S	Lot 165	Lots 208 & 209
	T	Lot 164	Lots 210 & 211

Notes:

- Areas & dimensions subject to resource consent and legal survey.
- Lots 101 & 604 to vest as Road.
- Lot 803 to vest as local purpose (recreation) reserve.
- Lot 802 to be held in common by Lots 315 - 332.

Key

- Indicative Water Mains
- Indicative Sewer Gravity Mains
- Indicative Sewer Pumping Mains



PATERSONPITTSGROUP
 Surveying • Planning • Engineering
 Your Land Professionals
 www.ppgroup.co.nz
 0800 PPGROUP

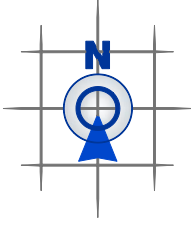
CROMWELL BRANCH
 30 The Mall,
 or
 PO Box 84,
 Cromwell 9342.
 T 03 445 1826
 E cromwell@ppgroup.co.nz

Client/Location:
**Wooring Tree Property Development
 Limited Partnership**

Purpose/Drawing Title:
**Lots 6 - 10, 101, 150 - 166, 200 - 214,
 218 - 258, 265 - 272, 279 - 299,
 301 - 515, 600 - 604 & 802 - 808 Being a
 Subdivision of Lot 200 RC190519**

© COPYRIGHT. This drawing, content and design remains the property of Paterson Pitts Partners Limited and may not be reproduced in part or full or altered without the written permission of Paterson Pitts Partners Limited. This drawing and its content shall only be used for the purpose for which it is intended. No liability shall be accepted by Paterson Pitts Partners Limited for its unauthorized use

Surveyed by:	MG	Original Size:	A3	Scale:	1:2000
Designed by:	MG				
Drawn by:	KWG				
Checked by:	MG				
Approved by:	MG	Sheet 1 of 6			DO NOT SCALE
Job Ref:	C2655_SCM_M	Version:	7	Revision No:	D
				Date Created:	16/04/2021



Areas & dimensions subject to resource consent and legal survey.

PATERSONPITTSGROUP
 Surveying • Planning • Engineering
 Your Land Professionals
 www.ppgroup.co.nz
 0800 PPGROUP

CROMWELL BRANCH
 30 The Mall.
 or
 PO Box 84,
 Cromwell 9342.
 T 03 445 1826
 E cromwell@ppgroup.co.nz

© COPYRIGHT. This drawing, content and design remains the property of Paterson Pitts Partners Limited and may not be reproduced in part or full or altered without the written permission of Paterson Pitts Partners Limited. This drawing and its content shall only be used for the purpose for which it is intended. No liability shall be accepted by Paterson Pitts Partners Limited for its unauthorized use

Client/Location:
Woong Tree Property Development Limited Partnership

Purpose/Drawing Title:
 Lots 6 - 10, 101, 150 - 166, 200 - 214, 218 - 258, 265 - 272, 279 - 299, 301 - 515, 600 - 604 & 802 - 808 Being a Subdivision of Lot 200 RC190519

Surveyed by:	Original Size:	Scale:
Designed by: PD	A3	1:1000
Drawn by: KWG		
Checked by: PD	Sheet 2 of 6	DO NOT SCALE
Approved by: PD	Job Ref: C2655_SCM_M	Revision No: D
	Sheet No: 7	Date Created: 16/04/2021



Areas & dimensions subject to resource consent and legal survey.



PATERSONPITTSGROUP
 Surveying • Planning • Engineering
 Your Land Professionals
 www.ppgroup.co.nz
 0800 PPGROUP

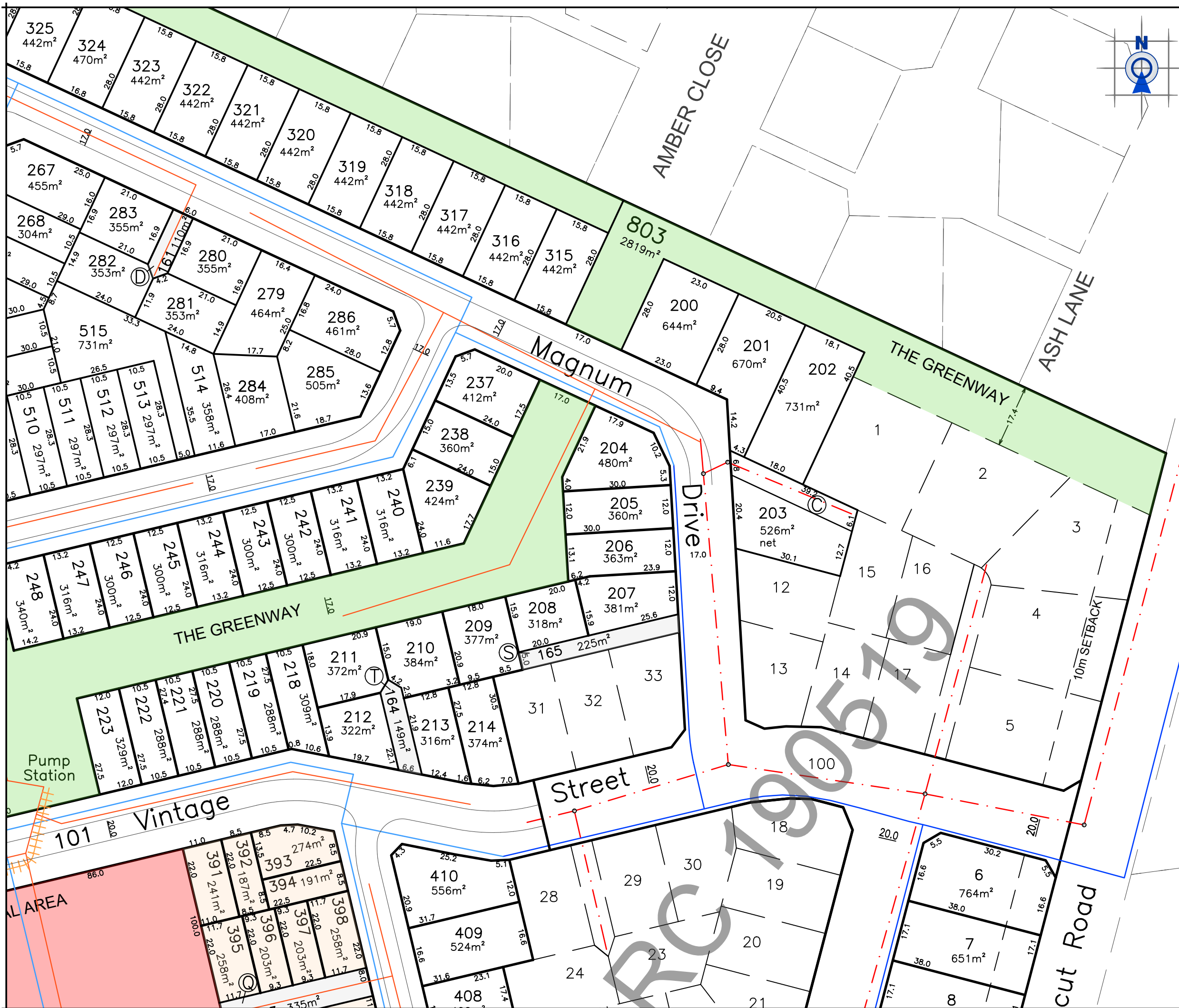
CROMWELL BRANCH
 30 The Mall.
 or
 PO Box 84,
 Cromwell 9342.
 T 03 445 1826
 E cromwell@ppgroup.co.nz

© COPYRIGHT. This drawing, content and design remains the property of Paterson Pitts Partners Limited and may not be reproduced in part or full or altered without the written permission of Paterson Pitts Partners Limited. This drawing and its content shall only be used for the purpose for which it is intended. No liability shall be accepted by Paterson Pitts Partners Limited for its unauthorized use

Client/Location:
Woong Tree Property Development Limited Partnership

Purpose/Drawing Title:
 Lots 6 - 10, 101, 150 - 166, 200 - 214, 218 - 258, 265 - 272, 279 - 299, 301 - 515, 600 - 604 & 802 - 808 Being a Subdivision of Lot 200 RC190519

Surveyed by:	Original Size:	Scale:
Designed by: PD	A3	1:1000
Drawn by: KWG		
Checked by: PD		
Approved by: PD	Sheet 3 of 6	DO NOT SCALE
Job Ref: C2655_SCM_M	Sheet No: 7	Revision No: D Date Created: 16/04/2021



Areas & dimensions subject to resource consent and legal survey.

PATERSONPITTSGROUP
 Surveying • Planning • Engineering
 Your Land Professionals
 www.ppgroup.co.nz
 0800 PPGROUP

CROMWELL BRANCH
 30 The Mall.
 or
 PO Box 84,
 Cromwell 9342.
 T 03 445 1826
 E cromwell@ppgroup.co.nz

© COPYRIGHT. This drawing, content and design remains the property of Paterson Pitts Partners Limited and may not be reproduced in part or full or altered without the written permission of Paterson Pitts Partners Limited. This drawing and its content shall only be used for the purpose for which it is intended. No liability shall be accepted by Paterson Pitts Partners Limited for its unauthorized use

Client/Location:
Woong Tree Property Development Limited Partnership

Purpose/Drawing Title:
 Lots 6 - 10, 101, 150 - 166, 200 - 214, 218 - 258, 265 - 272, 279 - 299, 301 - 515, 600 - 604 & 802 - 808 Being a Subdivision of Lot 200 RC190519

Surveyed by:	Original Size:	Scale:
Designed by: PD	A3	1:1000
Drawn by: KWG		
Checked by: PD	Sheet 4 of 6	DO NOT SCALE
Approved by: PD	Job Ref: C2655_SCM_M	Revision No: D
	Sheet No: 7	Date Created: 16/04/2021



Areas & dimensions subject to resource consent and legal survey.

PATERSONPITTSGROUP
 Surveying • Planning • Engineering
 Your Land Professionals
 www.ppgroup.co.nz
 0800 PPGROUP

CROMWELL BRANCH
 30 The Mall.
 or
 PO Box 84,
 Cromwell 9342.
 T 03 445 1826
 E cromwell@ppgroup.co.nz

© COPYRIGHT. This drawing, content and design remains the property of Paterson Pitts Partners Limited and may not be reproduced in part or full or altered without the written permission of Paterson Pitts Partners Limited. This drawing and its content shall only be used for the purpose for which it is intended. No liability shall be accepted by Paterson Pitts Partners Limited for its unauthorized use

Client/Location:
Woong Tree Property Development Limited Partnership

Purpose/Drawing Title:
 Lots 6 - 10, 101, 150 - 166, 200 - 214, 218 - 258, 265 - 272, 279 - 299, 301 - 515, 600 - 604 & 802 - 808 Being a Subdivision of Lot 200 RC190519

Surveyed by:	Original Size:	Scale:
Designed by: PD	A3	1:1000
Drawn by: KWG		
Checked by: PD		
Approved by: PD		
Job Ref: C2655_SCM_M	Sheet No: 7	Revision No: D
		Date Created: 16/04/2021

