



**RECORD OF TITLE
UNDER LAND TRANSFER ACT 2017
FREEHOLD**

**Guaranteed Search Copy issued under Section 60 of the Land
Transfer Act 2017**




R.W. Muir
Registrar-General
of Land

Identifier NA135D/350
Land Registration District North Auckland
Date Issued 27 September 2001

Prior References
NA126B/273

Estate Fee Simple
Area 288.0320 hectares more or less
Legal Description Lot 2 Deposited Plan 208031

Registered Owners

[REDACTED]

Interests

Subject to a right of way and rights to convey water, transmit electricity and telecommunications over part marked A on DP 208031 specified in Easement Certificate D643817.3 - 27.9.2001 at 9.00 am

Appurtenant hereto are rights to convey water, transmit electricity and telecommunications specified in Easement Certificate D643817.3 - 27.9.2001 at 9.00 am

Some of the easements specified in Easement Certificate D643817.3 are subject to Section 243 (a) Resource Management Act 1991 (see DP 208031)

9098178.2 Mortgage to Rabobank New Zealand Limited - 22.6.2012 at 12:03 pm

Approvals

REGISTERED OWNERS

I hereby certify that this plan was approved by the Far North District Council pursuant to section 223 of the Resource Management Act 1991 on the 13th day of December 2000 and that the reserving of the easements set out in the memorandum hereon.

Authorising Officer: *P. J. Williams*
 R. 2000/25

Schedule of Proposed Easements		Servient Tenement	Dominant Tenement
Electricity & Telecommunications easement	(B)	Lot 1 hereon	Lot 2 hereon

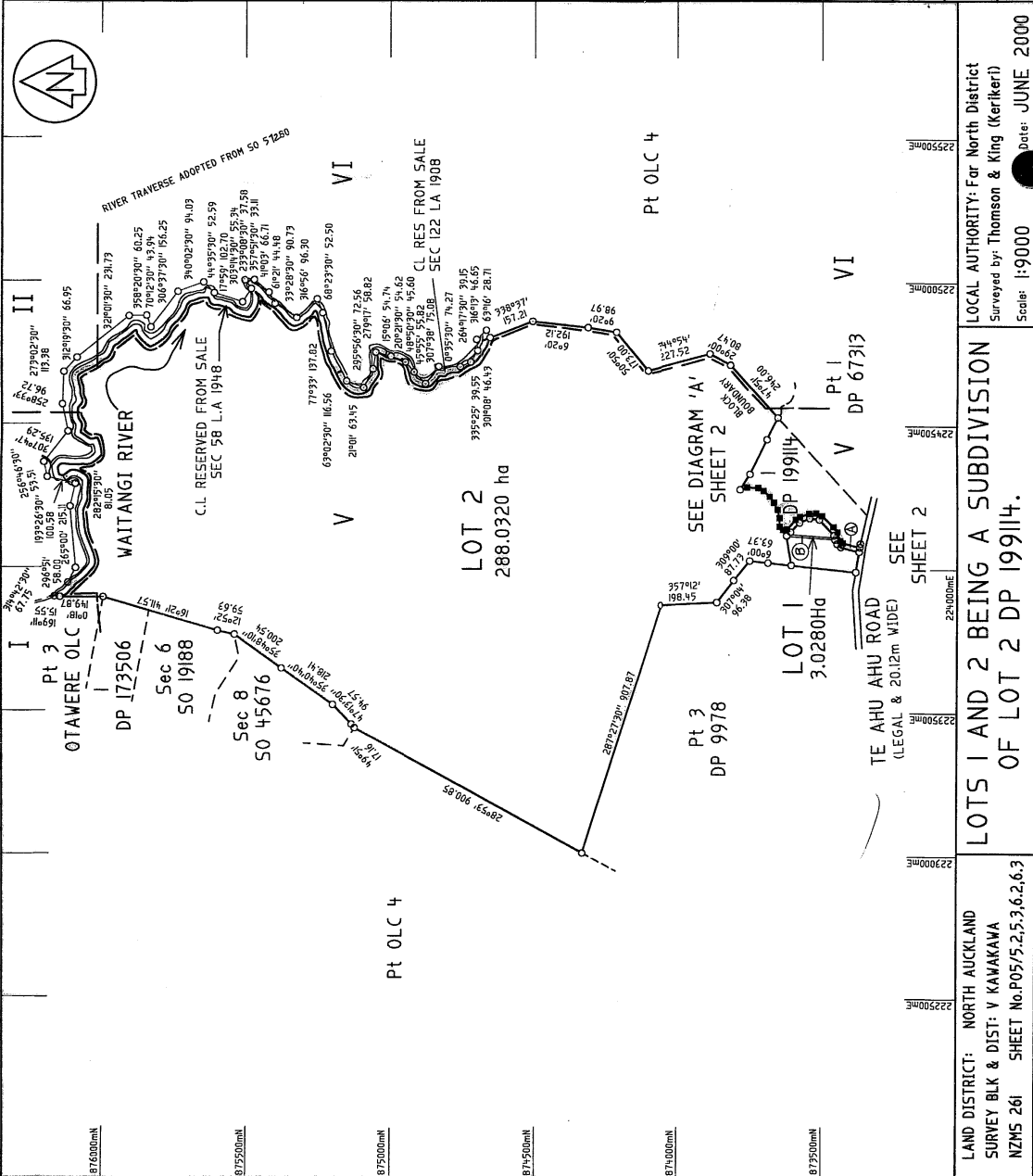
Memorandum of Easements	
Purpose	Shown
RIGHT OF WAY, TELECOMMUNICATIONS & WATER SUPPLY.	(A)
New Cst Allocated Lot 1 1352 349 Lot 2 1352 350	

CLASS OF SURVEY II
 SHEET I OF 2
 Total Area 291.0600Ha
 Comprised in C.T 1268/273

Licensee/Registrars, Thomson & King (Kerikeri), certify that as a registered surveyor, they have surveyed the land shown on this plan and that the bearings and distances are true and correct, and were undertaken by me or under my direction in accordance with the provisions of the Resource Management Act 1991. This document is accurate and has been created in accordance with that Act and those Regulations.

Signature: *P. J. Williams*
 Date: 5 July 2000
 Reference Plan: Traverse Book P
 Easement: Correct

Approved as to Survey: *P. J. Williams*
 Chief Surveyor
 22 July 2000
 Registered this 27th day of September 2000
 Fair Registrar General of Land
 In the presence of: *M. J. King*
 DP 208031
 Approved A.C.N. 00.022 CADI: 112 / 500H0VE PH



LAND DISTRICT: NORTH AUCKLAND
 SURVEY BLK & DIST: V KAWAKAWA
 NZMS 261 SHEET No. P05/5.2.3.6.2.6.3

LOCAL AUTHORITY: Far North District
 Surveyed by: Thomson & King (Kerikeri)
 Scale: 1:9000 Date: JUNE 2000

TE AHU AHU ROAD
 (LEGAL & 20.12m WIDE)

SEE DIAGRAM 'A' SHEET 2
 SEE DIAGRAM 'A' SHEET 2
 SEE DIAGRAM 'A' SHEET 2

DP 173506
 DP 19188
 DP 19914
 DP 67313
 DP 9978

OTAWERE OLC
 Pt 3
 Sec 6
 Sec 8
 Sec 50

WAITANGI RIVER
 RIVER TRAVERSE ADOPTED FROM SO 57280
 C.L. RESERVED FROM SALE SEC 58 L.A. 1948
 C.L. RES FROM SALE SEC 122 L.A. 1908

Pt OLC 4
 Pt 3
 Pt 1
 Pt 2
 Pt 4
 Pt 5
 Pt 6
 Pt 7
 Pt 8
 Pt 9
 Pt 10
 Pt 11
 Pt 12
 Pt 13
 Pt 14
 Pt 15
 Pt 16
 Pt 17
 Pt 18
 Pt 19
 Pt 20
 Pt 21
 Pt 22
 Pt 23
 Pt 24
 Pt 25
 Pt 26
 Pt 27
 Pt 28
 Pt 29
 Pt 30
 Pt 31
 Pt 32
 Pt 33
 Pt 34
 Pt 35
 Pt 36
 Pt 37
 Pt 38
 Pt 39
 Pt 40
 Pt 41
 Pt 42
 Pt 43
 Pt 44
 Pt 45
 Pt 46
 Pt 47
 Pt 48
 Pt 49
 Pt 50
 Pt 51
 Pt 52
 Pt 53
 Pt 54
 Pt 55
 Pt 56
 Pt 57
 Pt 58
 Pt 59
 Pt 60
 Pt 61
 Pt 62
 Pt 63
 Pt 64
 Pt 65
 Pt 66
 Pt 67
 Pt 68
 Pt 69
 Pt 70
 Pt 71
 Pt 72
 Pt 73
 Pt 74
 Pt 75
 Pt 76
 Pt 77
 Pt 78
 Pt 79
 Pt 80
 Pt 81
 Pt 82
 Pt 83
 Pt 84
 Pt 85
 Pt 86
 Pt 87
 Pt 88
 Pt 89
 Pt 90
 Pt 91
 Pt 92
 Pt 93
 Pt 94
 Pt 95
 Pt 96
 Pt 97
 Pt 98
 Pt 99
 Pt 100

Micro Record Bureau Ltd. DATA CONVERSION 24 OCT 2001

Approved A.C.N. 00.022 CADI: 112 / 500H0VE PH

Micro Record Bureau Ltd. DATA COMPRESSION SOFTWARE. 7 4 OCT 2001 1002

Approval

CLASS OF SURVEY II
SHEET 2 OF 2

Total Area
Comprised in

Lewis McGregor Thomson, being a person entitled to practise as a registered surveyor, certify that:
 (a) the surveys to which this dataset relates are accurate, and
 (b) this dataset is accurate, and has been created in accordance with that Act and these Regulations.

Signature: *Lewis McGregor Thomson*

Date: *22 July 2001*

Field Book: *P*

Reference Plans: *P*

Engraved: *Correct*

Approved as to Survey: *Lewis McGregor Thomson*
 Chief Surveyor

Deposited this *27* day of *September* 2001.

Registered as to Registrar General of Land

DP 208031

Approved AKA 02/02 CAD: TK2 / GIMROYEG PH

