

Lot 2
DP 170042

Lot 2
DP 170042

Lot 2
DP 170042

Description	Schedule		Record of Title
	Upper	Lower	
UNIT A	54.80	51.20	NA 103D/967
UNIT B	54.80	51.30	NA 103D/968
UNIT C	54.80	51.30	NA 103D/969
UNIT E	54.80	51.50	NA 103D/971
UNIT F	54.80	51.50	NA 103D/972
UNIT G	54.80	51.50	NA 103D/973
UNIT H	54.80	51.50	NA 103D/974
UNIT I	54.80	51.50	NA 103D/975
UNIT J	54.80	51.80	NA 103D/976
UNIT K	54.80	51.80	NA 103D/977
UNIT L	54.80	51.80	NA 103D/978
UNIT M	54.80	51.80	NA 103D/979
UNIT N	54.80	51.80	NA 103D/980
AU 100	54.80	51.00	
AU 31	54.80	51.40	
AU 32	54.80	51.40	
AU 35	54.80	51.40	
AU 36	54.80	51.40	
AU 55	54.80	51.40	
AU 56	54.80	51.40	
AU 59	54.80	51.40	
AU 60	54.80	51.40	
AU 61	54.80	51.40	
AU 62	54.80	51.40	
AU 63	54.80	51.40	
AU 64	54.80	51.40	
AU 65	54.80	51.40	
AU 66	54.80	51.40	
AU 67	54.80	51.40	
AU 68	54.80	51.40	
AU 70	54.80	51.40	
AU 71	54.80	51.40	
AU 72	54.80	51.40	
AU 73	54.80	51.40	
AU 74	54.80	51.40	
AU 76	54.80	51.40	
AU 77	54.80	51.40	
AU 78	54.80	51.40	
AU 79	54.80	51.40	

Prepared For:
Pudong Housing Development Co. Ltd &
Foodstuffs NI Ltd.

**REDEVELOPMENT OF
UNITS ON
LOT 1 DP 170042**

Land District: North Auckland
Firm: Yeomans Survey Solutions Limited
Surveyor: Neale Charles Faulkner

Territorial Authority: Auckland Council
Date: April 2021
File: 8424/RUT

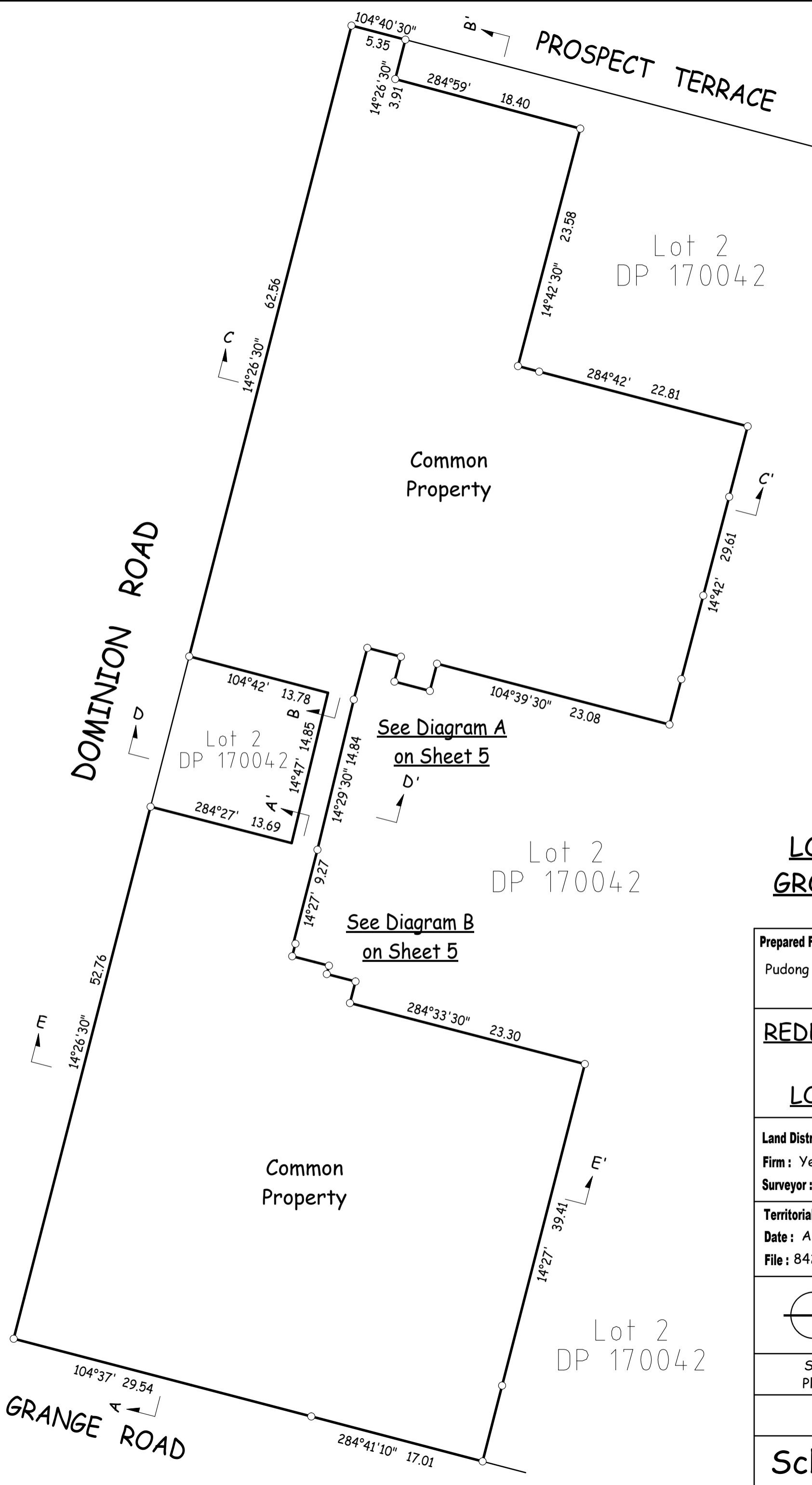
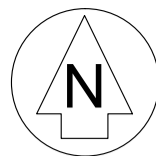


Supporting Document Title
Plan Graphic Sheet 1 of 4.

DP 170495

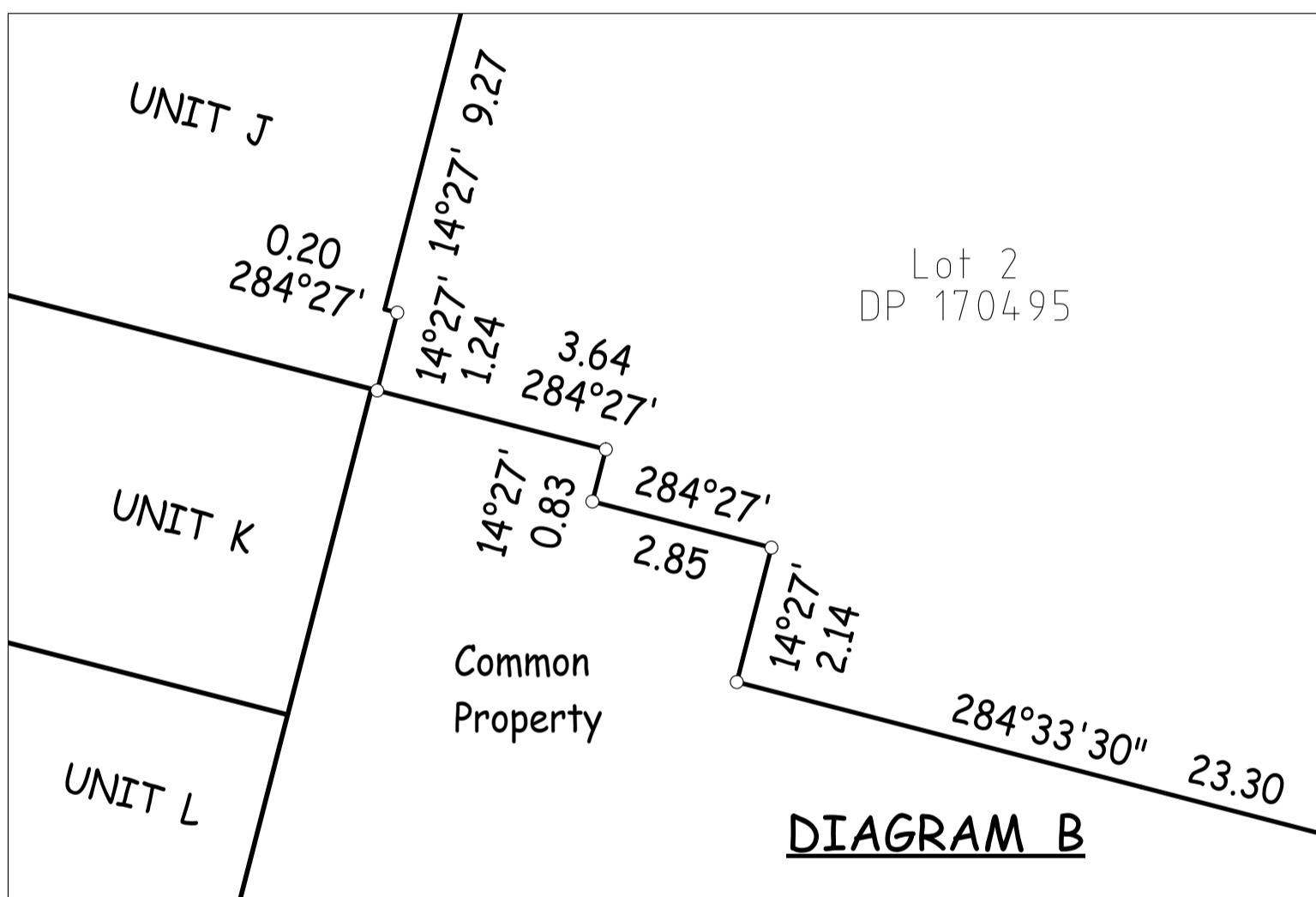
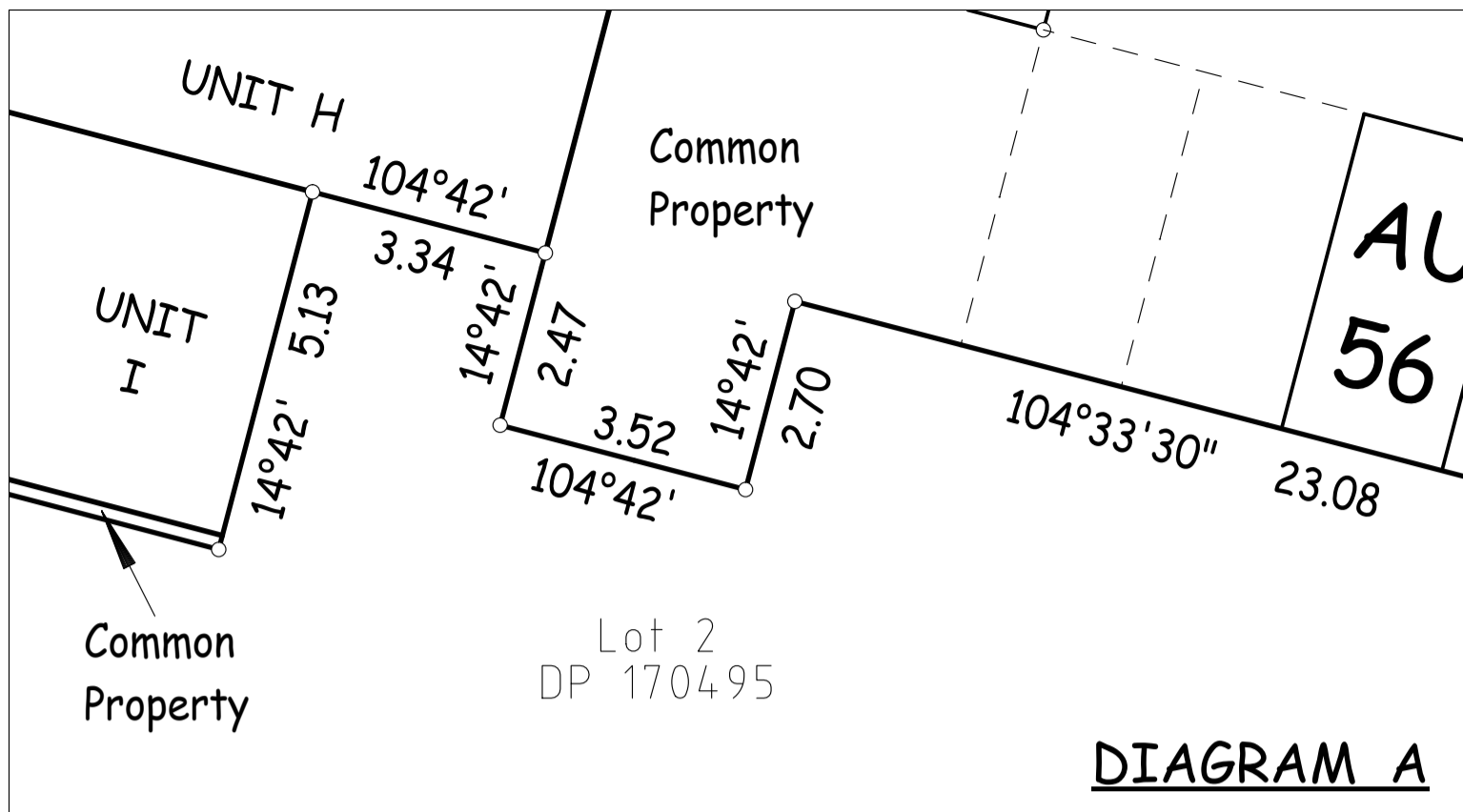
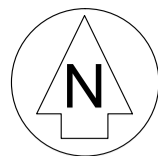
Scheme Plan 2B

GROUND FLOOR



**LOT 1 ABOVE
GROUND FLOOR**

<p>Prepared For: Pudong Housing Development Co. Ltd & Foodstuffs NI Ltd.</p>
<p><u>REDEVELOPMENT OF UNITS ON LOT 1 DP 170042</u></p>
<p>Land District: North Auckland Firm: Yeomans Survey Solutions Limited Surveyor: Neale Charles Faulkner</p>
<p>Territorial Authority: Auckland Council Date: April 2021 File: 8424/RUT</p>
<p> YEOMANS survey solutions</p>
<p>Supporting Document Title Plan Graphic Sheet 2 of 4.</p>
<p>DP 170495</p>
<p>Scheme Plan 2B</p>



Notes:

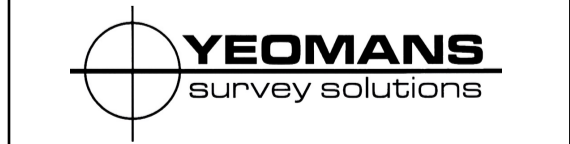
- 1) Building to boundary ofsets have been defined on DP 170042.
- 2) Origin of Levels is Survey Standard M16 SO 53794, RL50.915. Auckland Vertical Vertical Datum 1946.
- 3) Easements have been defined on DP 170042 and are Common Property where applicable.

Prepared For:
Pudong Housing Development Co. Ltd &
Foodstuffs NI Ltd.

**REDEVELOPMENT OF
UNITS ON
LOT 1 DP 170042**

Land District: North Auckland
Firm: Yeomans Survey Solutions Limited
Surveyor: Neale Charles Faulkner

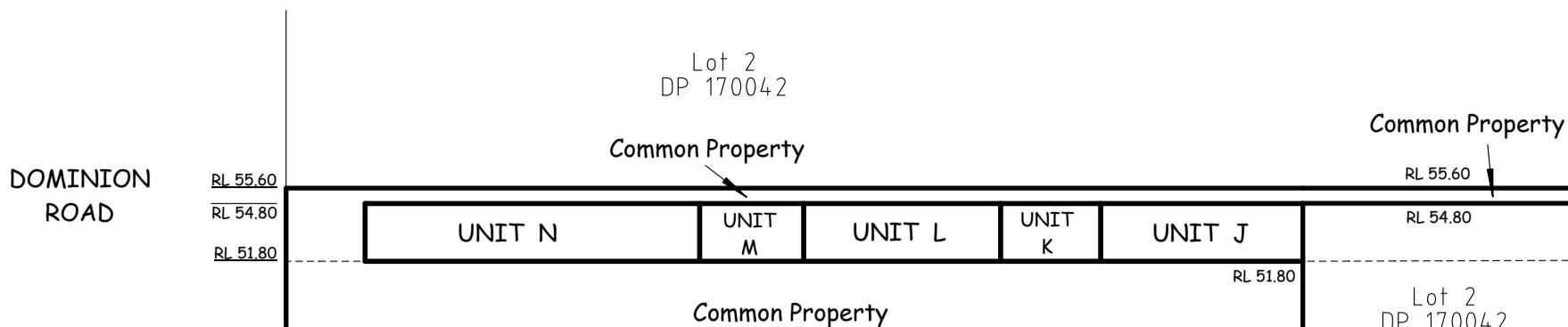
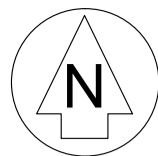
Territorial Authority: Auckland Council
Date: April 2021
File: 8424/RUT



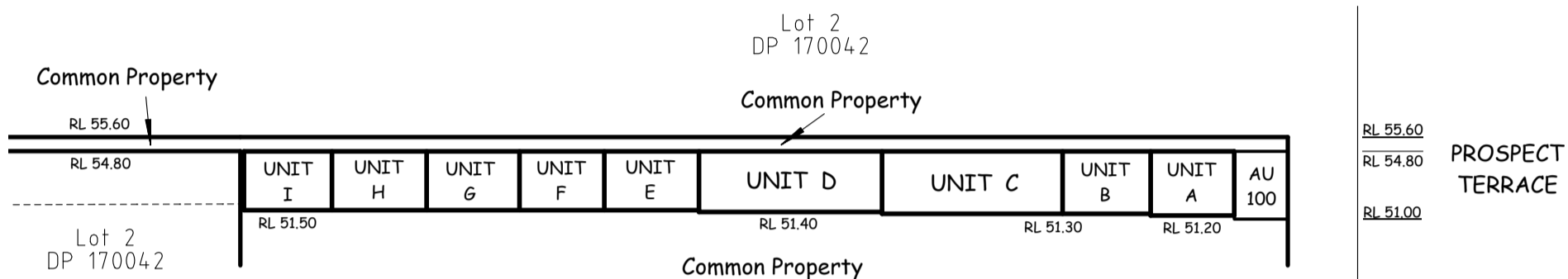
Supporting Document Title
Plan Graphic Sheet 3 of 4.

DP 170495

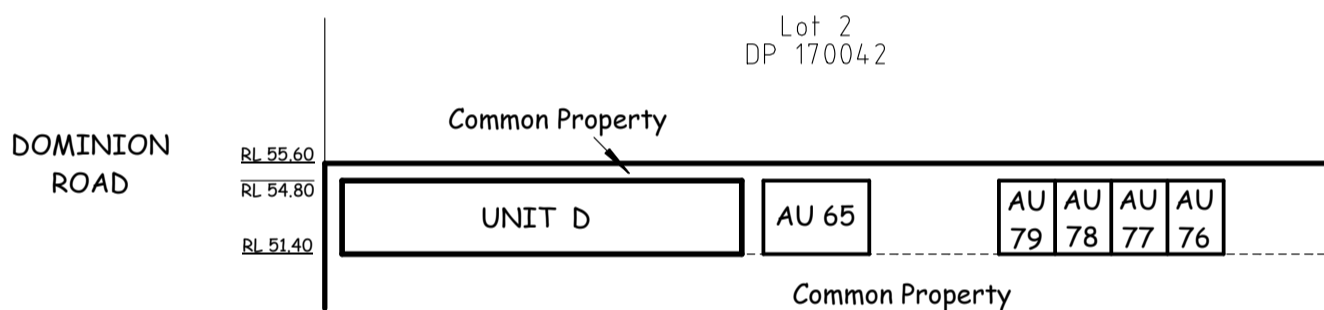
Scheme Plan 2B



CROSS SECTION A - A'



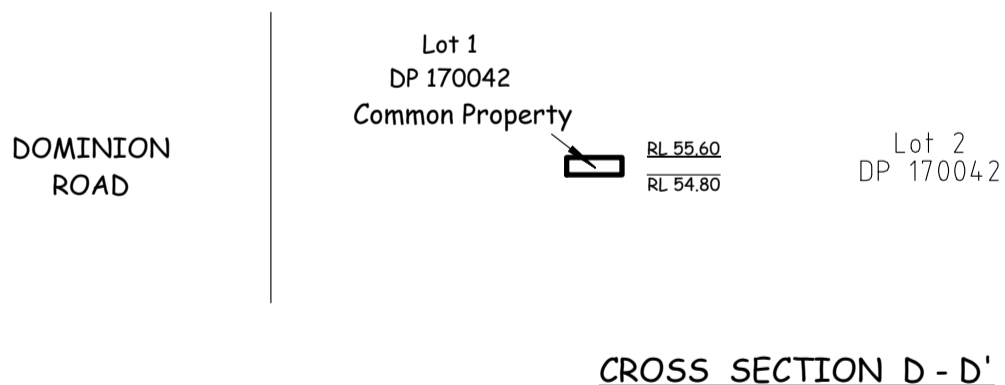
CROSS SECTION B - B'



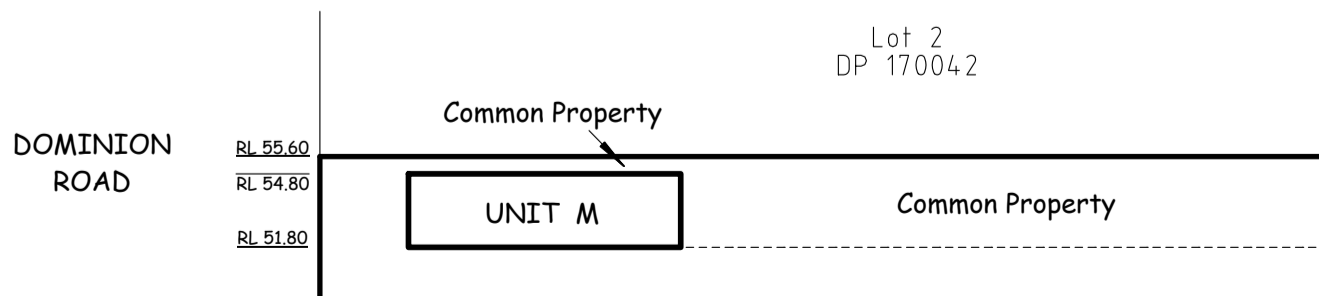
CROSS SECTION C - C'

Notes:

- 1) Existing Easements A, B, C, D, E, L, M, N, O, P, R, AB & AC are defined on DP 170042, and where applicable are Common Property.
- 2) Levels are in terms of Auckland Vertical Datum 1946.



CROSS SECTION D - D'



CROSS SECTION E - E'

REDEVELOPMENT OF UNITS ON LOT 1 DP 170042

Land District: North Auckland
Firm: Yeomans Survey Solutions Limited
Surveyor: Neale Charles Faulkner

Territorial Authority: Auckland Council
Date: April 2021
File: 8424/RUT



Supporting Document Title
 Plan Graphic Sheet 4 of 4.

DP 170495

Scheme Plan 2B